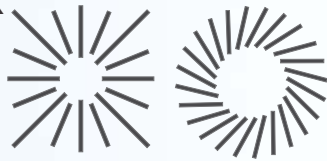


DCF



## DCF-S DCF-R

DCF-S - DCF-R  
square swirl ceiling diffuser with adjustable slots



DCF-RC  
circular diffuser with adjustable slots



### advantages

- Careful design.
- Architectural integration.
- False ceiling slab diffuser.
- Adjustable slots.
- High induction.

### range

- 3 square models from 300 to 600 mm <sup>2</sup>/h without plenum.
- 3 square models from 300 to 600 mm <sup>2</sup>/h with plenum.
- 3 circular models from 300 to 600 mm <sup>2</sup>/h with plenum.

### designation

DCF type	shape of the slots	diameters	number of slots
D: diffuse	R: round	D 600 : slab of 600 x 600	16
T: swirl	E: star	D 625 : slab of 625 x 625	24
		C 400 : circular Ø 400	
		C 600 : circular Ø 600	

### application

- Architectural applications in false ceiling.
- Premises of medium height needing optimal comfort.

### construction / composition

- Plate :
  - Plate in galvanised steel, finish white paint, RAL 9010.
  - Adjustable slots in painted steel, colour black.
- Plenum :
  - Plenum in galvanised steel.
  - Fixing by visible screws.
  - Integrated damper in the spigot.
  - Flow equalisation perforated face.

### options

- All RAL paints.
- Without plenum.
- Sound proof and insulated plenum.

### packaging

- Individual, in box.

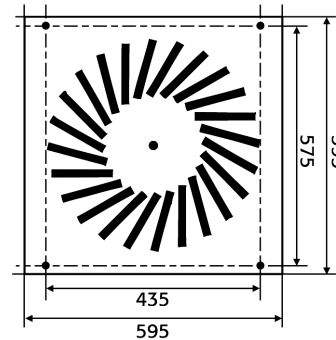
### specifications

- The ceiling diffusers will have a "slab" format (600 x 600), they will diffuse without ceiling effect with a swirl jet. The adjustable vanes will enable the adjustment of the air vane. The plenum will be equipped with a balancing damper and a punched sheet.
- They will be in galvanised steel painted white, RAL 9010, black slots.

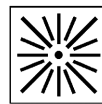
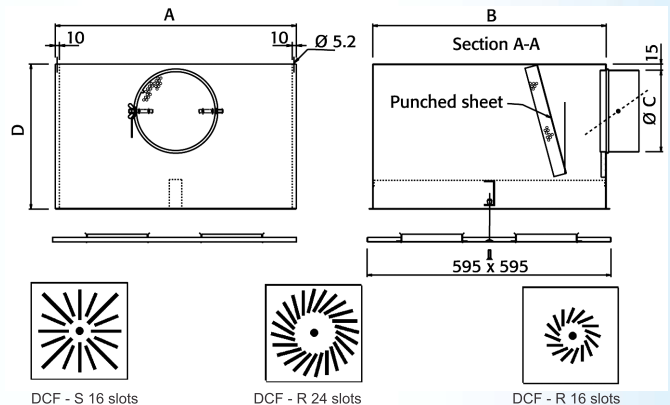
## Technical Description

DCF-S square diffuser without plenum: plate alone

- Thickness of the plate : 10 mm.



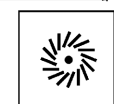
DCF-R square diffuser with integrated plenum (assembled in factory)



DCF - S 16 slots



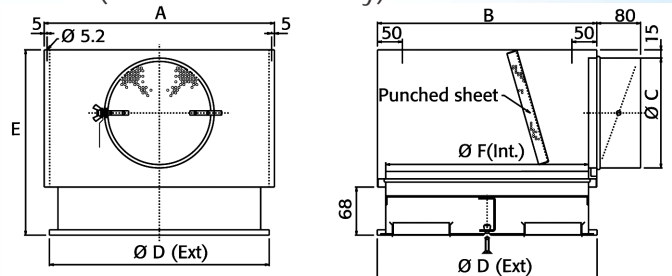
DCF - R 24 slots



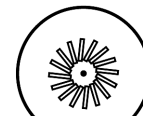
DCF - R 16 slots

Diffuser type	D (mm)	A	B	Ø C
DCF - S 16 slots	300	388	370	199
DCF - R 24 slots	350	588	570	249
DCF - R 16 slots	300	388	370	199

DCF-RC circular diffuser with integrated plenum (assembled in factory)



DCF - RC 16  
Ø 400



DCF - RC 16  
Ø 600



DCF - RC 24  
Ø 600

Diffuser	Ø D (ext)	E	A	B	Ø C
DCF - RC 16	400	317	428	408	199
DCF - RC 16	600	317	428	408	199
DCF - RC 24	600	367	619	599	249

Dimensions in mm.

## Fitting And Connection

### Diffuser alone

- Fixing by 4 visible lateral screws on the PFU 600 K or PFU 600 M (frame pre-pierced).

### Diffuser with plenum

- Fixing by central screw on the plenum (assembled in factory).
- Direct joining on the circular duct using the plenum.



## Selection Chart

Flow (m <sup>3</sup> /h)	Model	DCF-S 16	DCF-R 16	DCF-R 24
	Ak (m <sup>2</sup> )	0,035	0,016	0,038
200	X (m)		1,0	
	NR		21	
	Pt (Pa)		8	
250	X (m)		1,3	
	NR		29	
	Pt (Pa)		12	
300	X (m)		1,5	
	NR		35	
	Pt (Pa)		18	
350	X (m)		1,8	
	NR		41	
	Pt (Pa)		24	
400	X (m)		2,0	1,3
	NR		45	16
	Pt (Pa)		32	6
500	X (m)	1,7		1,7
	NR	23		23
	Pt (Pa)	11		9
600	X (m)	2,1		2,0
	NR	29		30
	Pt (Pa)	16		13
800	X (m)	2,8		2,7
	NR	40		40
	Pt (Pa)	28		24
1000	X (m)	3,5		3,4
	NR	47		48
	Pt (Pa)	44		37

NR < 25

35 ≤ NR < 45

25 ≤ NR < 35

NR ≥ 45

Indicated NR : sound power level without room attenuation.